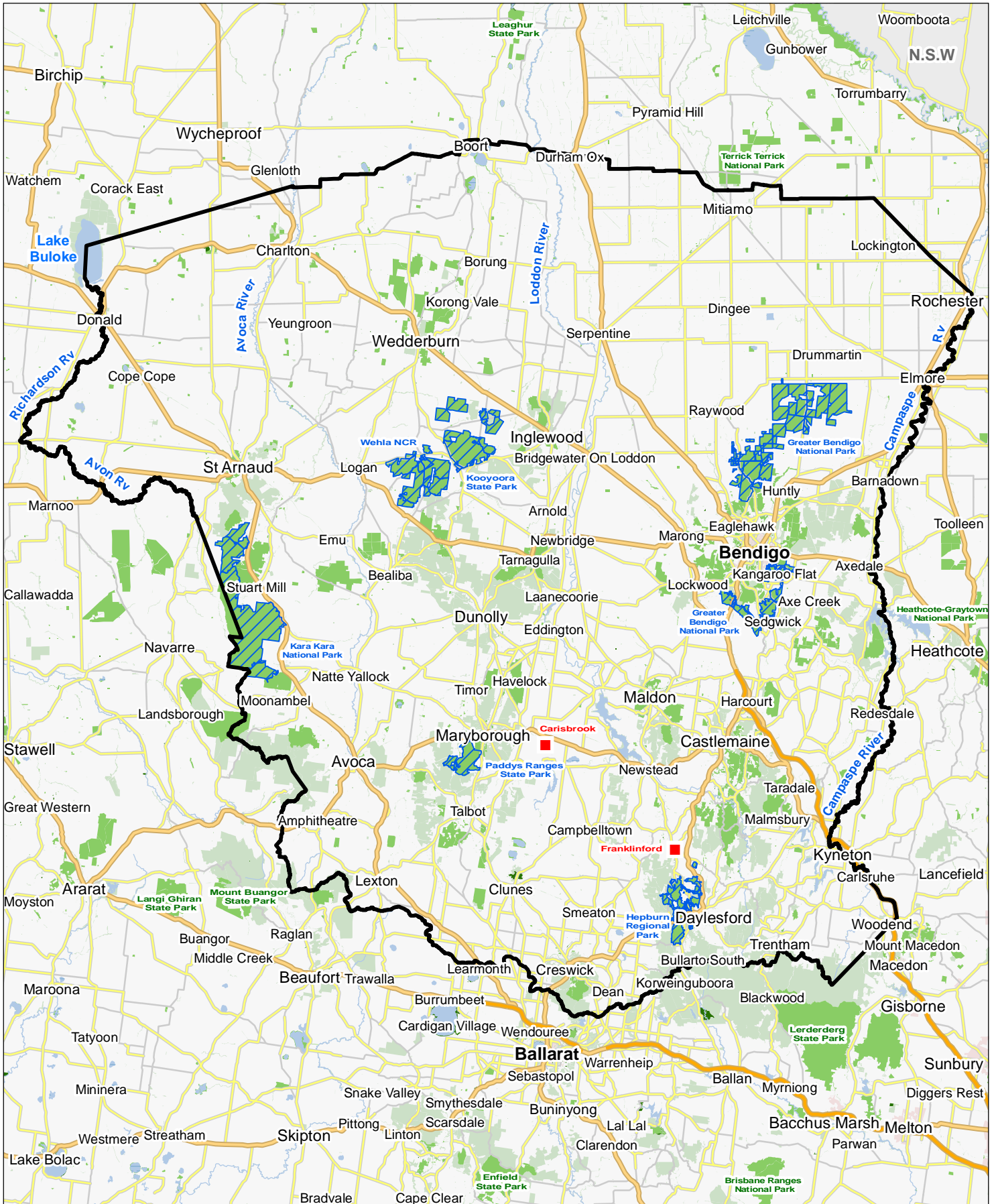


# Dja Dja Wurrung Recognition and Settlement Agreement Area









Map Produced by Information Integration, Information Services Branch, February 2013  
 P:\p\_102461\programs\lrcmap\_v10\djadja\_wurrung\_rsa\_only\_overview\_a4\_v1.mxd  
 Spatial data is sourced from the Victorian Spatial Data Library.  
 Copyright © The State of Victoria, Department of Sustainability and Environment 2013

**Disclaimer**  
 This publication may be of assistance to you but the State of Victoria and its employees do not guarantee that the publication is without flaw of any kind or is wholly appropriate for your particular purposes and therefore disclaims all liability for any error, loss or other consequence which may arise from you relying on any information in this publication.

**Accessibility**  
 If you want this publication in an accessible format, such as large print or black-and-white, please phone 136 186, or email customer.service@dse.vic.gov.au.  
 Deaf, or hearing or speech impaired? Call us via the National Relay Service on 133 677 or visit www.relay.vic.gov.au

## Legend

-  External boundary of area subject to Recognition and Settlement Agreement under Traditional Owner Settlement Act 2010 (Vic) and Indigenous Land Use Agreement under Native Title Act 1993 (Cth)
-  Parks and Reserves managed by Parks Victoria
-  Parks and Reserves managed by DSE/COM/Other
-  Other Public Land

-  Carisbrook and Franklinford freehold transfers
-  Areas of Joint Management with Aboriginal Title
  - Greater Bendigo National Park
  - Kara Kara National Park
  - Paddy's Ranges State Park
  - Hepburn Regional Park
  - Kooyoorra State Park
  - Wehla Nature Conservation Reserve

